

BOARD
OF
DIRECTORS

TOM BORREGO

Newman University

YOLANDA CAMARENA—PRESIDENT

Community Volunteer

GARY FREEMAN—TREASURER

Regier Carr & Monroe, L.L.P.

DOMINIC GAUNA

Sunflower Broadcasting, Inc.

IRMA LUNA—SECRETARY

Community Volunteer

JEANNE MENDOZA

Cox Business

DR. DONALD MUNDAY

Pratt Community College

ROGER PFLUGHOEFT—VICE PRESIDENT

Bank of the West

CHARLES RIVERA

Eagle Strategies LLC

DR. ZULMA TORO-RAMOS

Wichita State University

ANNA VILLARREAL

Butler Community College

PRESIDENT'S CORNER

We are very excited to present our first KHEDF newsletter. Our goal is to provide you with “regular insights” on our announcements, successes and projects.

Over the last year, KHEDF has been busy—

KHEDF will be ending a yearlong collaboration in December, with the African American Coalition. The Community Leadership Development Project trained grass root leaders from the Hispanic and African American community.

KHEDF collaborated with the Wichita Hispanic Chamber of Commerce to award thirteen well deserving Hispanic high school students with scholarships.

This year, KHEDF will direct its mission and focus on scholarships and education initiatives. The Kansas Hispanic Scholarship Program



Yolanda Camarena

provides support for highly qualified Hispanic students to achieve their dream of going to college.

KHEDF's Board of Directors grew from five Board members to eleven—joining the board—Tom Borrego, New-

man University; Dominic Gauna, Sunflower Broadcasting, Inc.; Irma Luna, Community Volunteer; Jeanne Mendoza, Cox Business; Don Munday, Pratt Community College; and Anna Villarreal, Butler Community College.

We invite you to be a partner by supporting our mission and programs!

With the expertise and skills of our Board of Directors and your support, we will be one step closer to our vision—where every Latino household will have at least one college graduate!

HOW TO GIVE

For information on how you can give a true gift, contact the KHEDF office at khedf@yahoo.com

SCHOLARSHIPS ARE CRITICAL FOR ACADEMIC OPPORTUNITY

In Kansas, access to higher education is becoming more and more difficult for many of our Hispanic students. As tuition costs increase, ways to finance a college education is becoming daunting. Here is how you can help.

Understand how scholarships are used at a private and public university. In Kansas, most private universities provide merit scholarships (discounts) to all freshmen based on their academic achievement in high school. The more successful,

the more scholarship funds are made available. An average student often receives less scholarship funding and needs supplemental scholarships to help reduce tuition costs. Creating a scholarship with KHEDF helps students who wish to attend a private university.

Unlike private college which offers a “discounted tuition”, a public university only gives a scholarship that has actual funding. Public universities typically do not have enough

funding for all the students who qualify for a scholarship. Your funding of a KHEDF scholarship will allow a student the opportunity to attend a public university.

Both types of universities have its advantages. Allowing Hispanic students the choice to choose their best option is a true gift.

Support the Kansas Hispanic Scholarship Program with a gift!

BERNARDO MIRANDA

Bernardo Miranda, a South High graduate, was the recipient of the Pratt Community College \$3,500 tuition + books scholarship where he is enrolled full-time and majoring in pre-nursing.

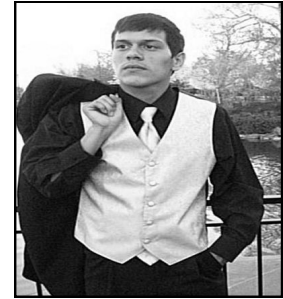
In school, Bernardo has enrolled in an average schedule and kept his GPA above a 3.0 every semester. He was a member of the cross country team for three years-where he received several team

honors and earned several race medals. His contributions to the team and his work ethic were impressive.

Along with his academic achievements and school activities, Bernardo held a job throughout high school. He had to balance school, sports and a heavy workload. He always appreciated having a job and being able to contribute to his family.

Many students at South sought his advice, and appreciated his pleasant, encouraging attitude.

He will be the first one in his family to receive a college degree and proving that with a strong work ethic and commitment to a purpose, anything is possible.



Pratt Community College

2011
Wichita Hispanic Chamber of Commerce, and
Kansas Hispanic Education & Development Foundation
scholarship recipient

DEVERICK ARIAZ



LDF/Wendy's Dave Thomas Hispanic Legacy

2011
Wichita Hispanic Chamber of Commerce and
Kansas Hispanic Education & Development Foundation
scholarship recipient

Northwest High School graduate Deverick Ariaz dreamt about attending college. His dream came true with the LDF/Wendy's Dave Thomas Hispanic Legacy Award scholarship.

Deverick, a Crew Member at Wendy's since 2009, will use the \$1,000 grant to help offset the cost of attending Wichita State University. As part of the scholarship application process, Deverick wrote an essay entitled, "DO THE RIGHT THING!"

Deverick did the right thing! He did not hang out with his friends, but studied for tests and worked on his projects. At work, he always went the extra mile for the Wendy's customers.

Chris Lee, his supervisor at Wendy's said, "He's a good employee, always on time, neatly dressed, and very intelligent." Chris is glad that Deverick chose to continue to work at Wendy's as he begins his college education.

"The Foundation was formed to provide a platform for donors to make a tax-deductible contribution for scholarships and educational initiatives."

WHCC / KHEDF COLLABORATE

In 2007, the Wichita Hispanic Chamber of Commerce, Inc. (WHCC) Chamber leaders worked diligently to create the Kansas Hispanic Education & Development Foundation (KHEDF) as a 501(c)(3) nonprofit organization.

The Foundation was formed to provide a platform for donors to make a tax-deductible contribution for scholarships

and education initiatives.

To begin the collaboration, KHEDF will manage the Kansas Hispanic Scholarship Program which had been under the responsibility of the Wichita Hispanic Chamber of Commerce.

Also, WHCC has opened their doors to allow KHEDF to be housed in their suite at Ma-

rina Points— 1999 N Amidon, STE 365.

Yolanda Camarena, President of the KHEDF Board, and Patty Koehler, chair of the WHCC Board, look forward to working together to bring scholarships and educational initiatives to the Hispanic community and the community at large.